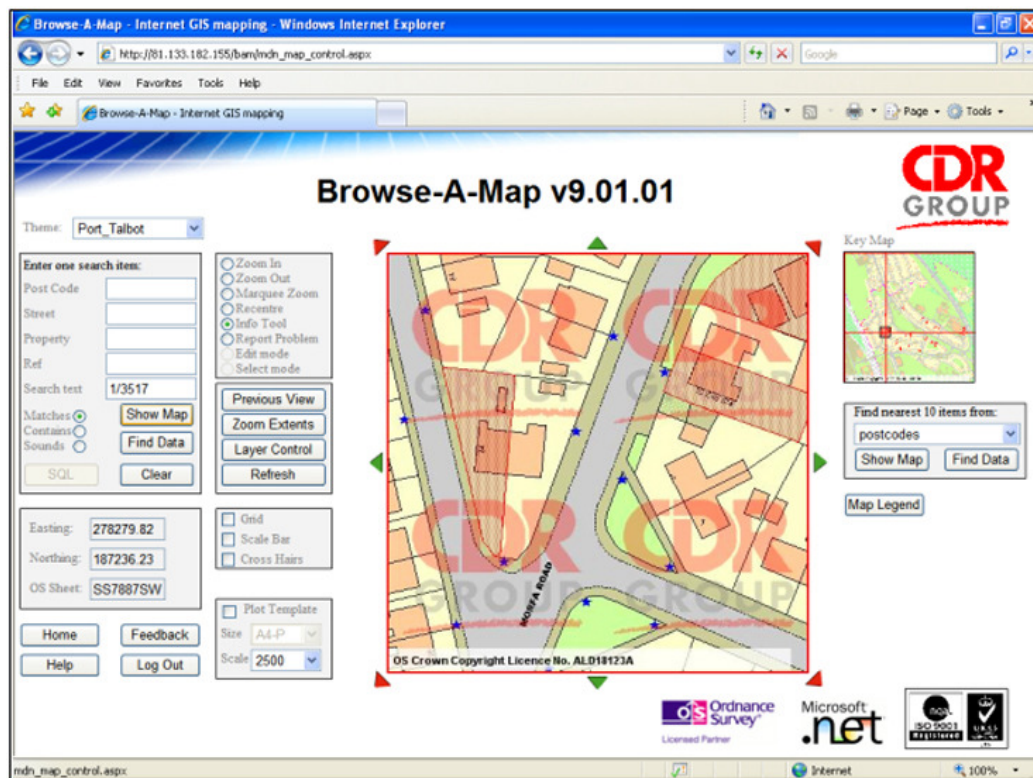


*CDR Group presents*

# BROWSE-A-MAP

**AFFORDABLE WEB MAPPING**



Adopting a "pure" .NET principle, CDR has written a simple browser based interface, allowing users to view maps. The application has the facility to quickly pan, re-centre, zoom by marquee, find features and retrieve attribute information from data stored in various file formats (including ESRI shape, MapInfo TAB, TIFF/JPG/ECW Raster and even CDR's STC25 sewer network files). Simple project files, analogous to workspaces or projects used in other systems, co-ordinate the mapping available to users.

Think of the possibilities - cost effective, centrally administered, web-based GIS data distribution - available to anyone who needs it, using nothing more than a standard web browser.

Doc: MIIS-69 Ver: 1.06 Date: 6<sup>th</sup> August 2010

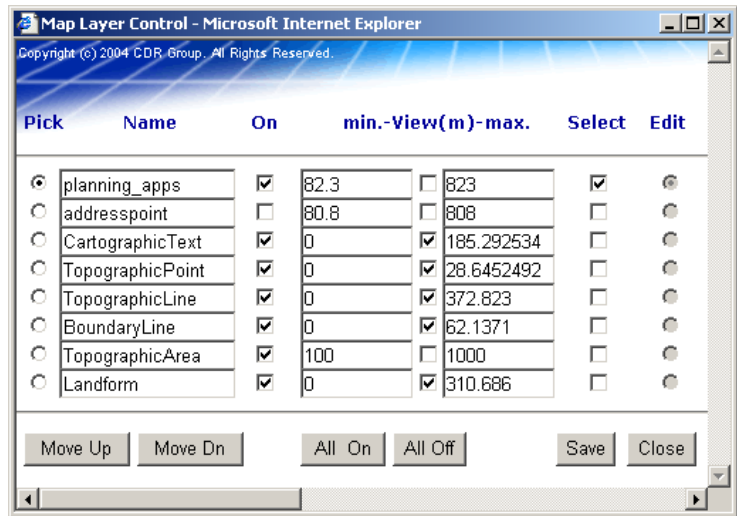


# BROWSE-A-MAP

## .NET WEB MAPPING

### Features and options include:

- A dynamic 'bird's eye view' facility, allowing users to navigate and keep track of their current position within the project
- Comprehensive layer management
- Real-time co-ordinate and OS sheet references
- Optional cross-hairs
- Optional scale bar
- Optional gridlines
- Dynamic plot template placement
- OS copyright and licence watermarking
- Previous view
- Zoom extents
- Password protected access
- User settings stored between sessions
- An effective 'Help' system
- End users only require Internet Explorer 5.5 or higher
- Interactive reporting function
- "Find the Nearest" function
- Fuzzy searching capabilities on data
- ECW raster imagery support



### There are:

- **No** additional plug-ins
- **No** 3rd party toolboxes
- **No** downloads
- **No** cookies
- **No** special server requirements, other than the .NET framework

The whole application will fit, uncompressed, on a **single floppy disc!!**

The system is infinitely scaleable as it only makes .NET framework calls.

It can be deployed on free ISP servers.

Simple remote FTP administration provides easy installation and maintenance – no end user downloads or updates are necessary.

Alternatively, mapping and data can be "served" from individual text records with a link or button using our sister product **Serve-A-Map**.

A modified version is available for Pocket Internet Explorer, bringing web based mapping to PDA devices.

To see a demonstration version of this project in action and further details go to <http://www.puredotnet.co.uk>.

**For further information, please contact John levers at CDR Group on 01433 621282.**



Doc: MIIS-69 Ver: 1.06 Date: 6<sup>th</sup> August 2010

### CDR Group

Eccles House, Eccles Lane, Hope, Hope Valley. S33 6RW. U.K.

Tel: 01433 621282

Fax: 01433 621292

EMAIL address: sales@cdrgroup.co.uk

Web Site: <http://www.cdrgroup.co.uk>

